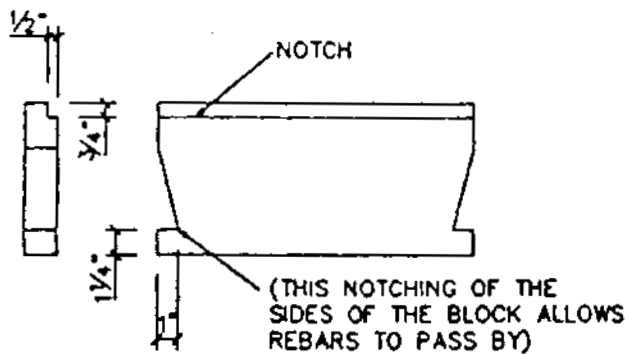
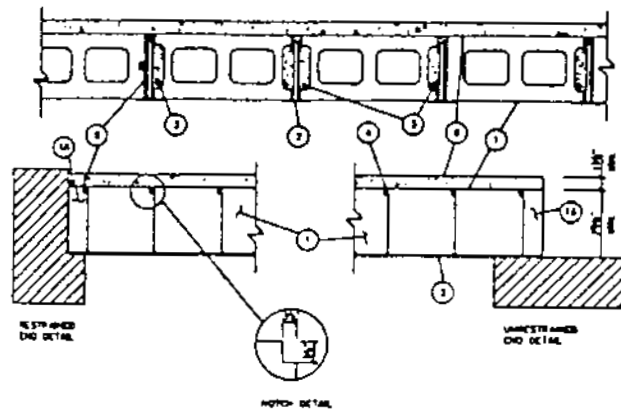


**Design No. K907**  
**Restrained Assembly Ratings—2 and 3 Hr (See Item 6)**  
**Unrestrained Assembly Ratings—2 and 3 Hr (See Item 6)**



**CLOSURE BLOCK**

1. **Concrete Blocks\***—Various shapes, Classification D-2 (2 h). Two core units of curved or flat end types measuring nom 8 x 8 x 16 in. or 12 x 8 x 16 in. Blocks supported on bottom plate of steel joists. Blocks are notched and cut at corners to provide for passage of cement-sand grout (Item 5) into joints at joist location and for filling the voids surrounding the reinforcing bars (Item 3) to allow for their full embedment and cover.  
 See Concrete Blocks (CAZT) category for list of eligible manufacturers.
  - 1A. **Closure Blocks**—Light weight masonry solid blocks, ASTM C90 precut to shape, 8 or 12 in. high by 16 in. wide. Thickness ranging from 1-5/8 to 3-5/8 in.
  2. **Steel Forming Members\***—Steel forming members intended to support blocks during construction. Noncomposite steel joists 7 or 11 in. deep, spans ranging between 6 and 23 ft. Joists spaced at 16.67 in. OC. Min bearing 2 in.  
 Block Joist Co.—Types A and B
  3. **Reinforcing Steel**—Nos. 3, 4 or 5, Grade 60. Reinforcing steel inserted into the voids between blocks, then covered with cement-sand grout filled inside through the end joints of the blocks at the steel joist locations. Reinforcing steel is designed in accordance with ACI Building Code Requirements to develop the required floor capacity to support its self weight as well as the superimposed vertical loads without any contribution from the steel forming members.
  4. **Wire Reinforcement**—For lateral bracing of the block-joist floor. No. 9 gauge (0.144 in. diam) wire placed inside the pre-cut grooves at the sides of the blocks perpendicular to the steel joists. The wire ends may be spliced at the centerline of the floor overlapping 8 in. min. The outer ends of the wires folded and placed 4 in. down between the top plates of the joists.
  5. **Cement-Sand Grout**—Consisting of 2-1/2 parts of masonry sand (ASTM C144) and 1 part of Portland Cement Type I by bulk volume, mixed with 10 gal of water per bag of cement. Min 2500 psi compressive strength and 110 plus or minus 3 pcf unit weight. Grout poured over the entire floor to fill the joints between the concrete blocks, the steel joists covering the wire reinforcement, and the void space around the reinforcing steel, to secure embedment and cover for the reinforcement.
  6. **Concrete Topping**—For 3 h ratings, min thickness 1-1/2 in. Normal weight or lightweight aggregate, min 3000 psi compressive strength, and 110 to 153 pcf unit weight.
- \*Bearing the UL Classification Marking