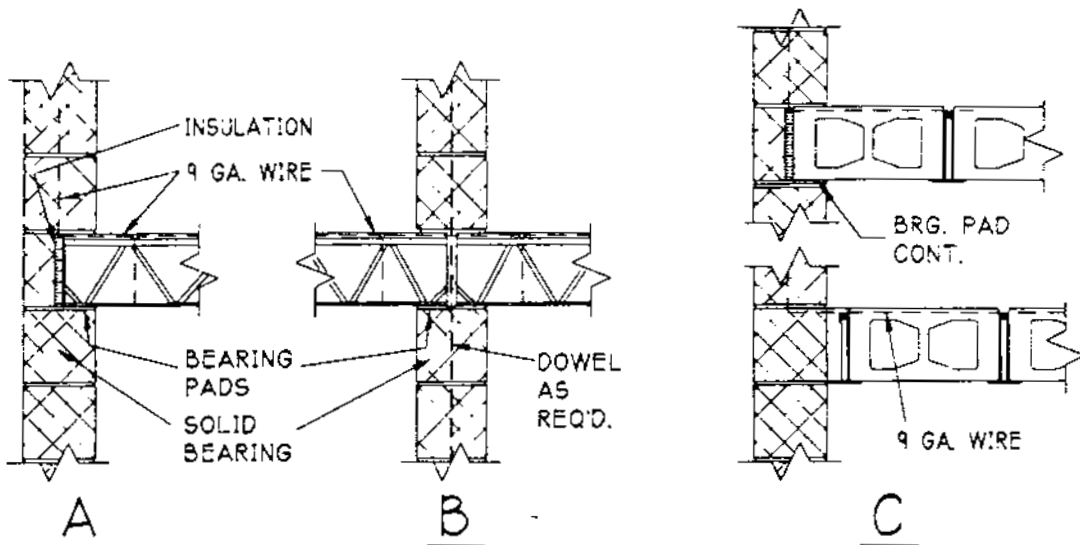
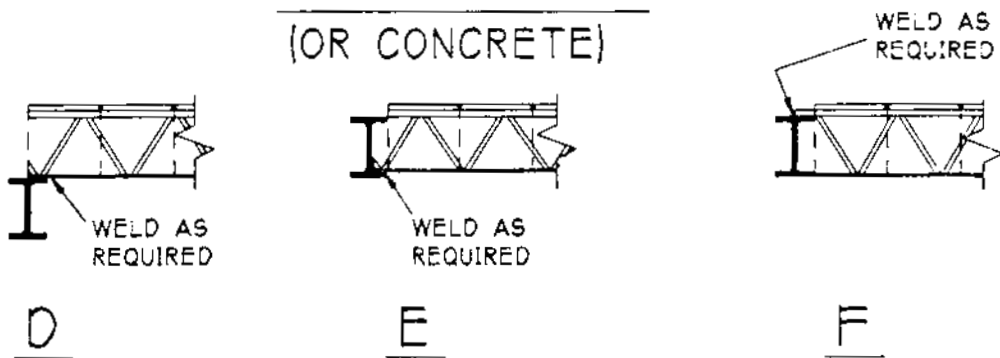


A FEW TYPICAL CONNECTIONS



ON MASONRY (OR CONCRETE)



ON STEEL

NOTES:

1. SOLID OR SEMI-SOLID BLOCKS MAY BE USED AT THE ENDS OF JOISTS TO PREVENT FILLING THE CORES WITH GROUT.
2. STIFF MORTAR AND/OR PERIMETER INSULATION MAY BE USED TO PLUG GAPS PRIOR TO GROUTING.
3. SECTIONS 'A'-'E' CAN BE MADE FROM STOCK BLOCK JOISTS.TM BLOCK JOISTSTM FOR SECTION 'F' ARE MADE TO LENGTH.